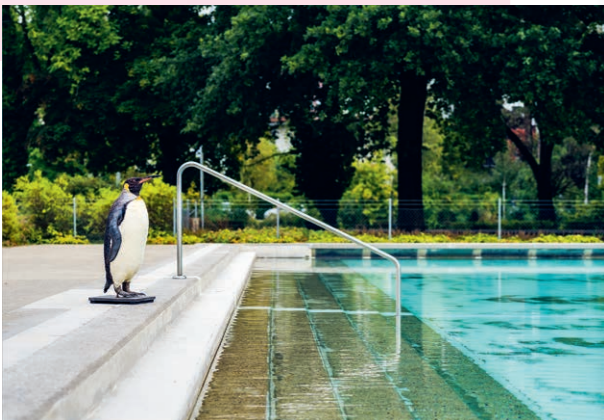




NATUR
HISTORI
SCHES
MUSEUM
BERN

Outreach

Research



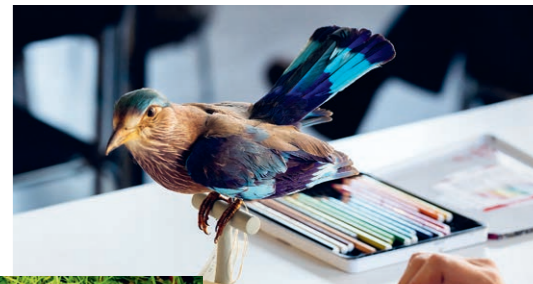
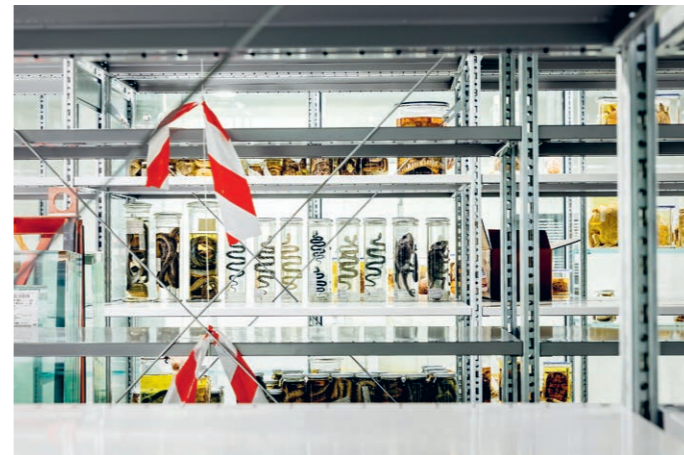
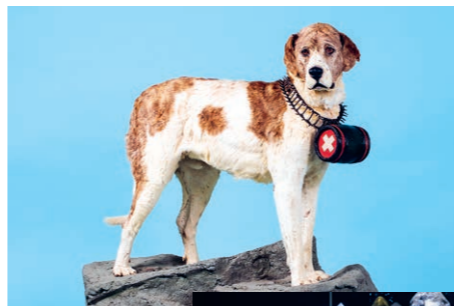
Collect

Inspire



ABOUT US

The Natural History Museum Bern (NMBE) is an institution belonging to the Burgergemeinde Bern and was founded in 1832. The historical dioramas at Bern's oldest museum, with animal specimens from Switzerland, Africa, North America and Asia, are unique in Europe and have played a major role in establishing the museum's international reputation. The best-known collection items include Barry, the worldfamous rescue dog, and the giant crystals from Planggenstock. In total, the museum collection contains around 6.5 million objects. It is not just the heart of the museum, but is also an important resource for the in-house research department. The NMBE is one of 11 institutions that form Bern Museum Quarter.



EXHIBITIONS

SPECIAL EXHIBITIONS

Our temporary exhibitions deal with topics relating to natural sciences and socially relevant issues. Find out all about our current special show at: www.nmbe.ch.

PERMANENT EXHIBITIONS

- Animals of Africa — Dioramas 1935–1984
- Animals of Asia — Dioramas 1978–1990
- Animals of Switzerland — Dioramas 1941
- Animals of the North — Dioramas 1942–1968
- Barry — The legendary St. Bernard
- Beetles and co. — The colourful world of invertebrates
- Cabinet of Curiosities — The display collection
- Earth, folks! — The changing climate
- Fins-feet-wings — The story of vertebrate evolution
- Giant crystals — The Planggenstock treasure
- Nature Lab — Life is relationships
- Pica's Nest — a forest experience for the whole family
- Rocks of the Earth — Bijoux of the Alps and from all over the world
- The great bone gallery — Inside the belly of the whale

OPENING HOURS

Monday 2 pm—5 pm

Tuesday, Thursday, Friday 9 am—5 pm

Wednesday 9 am—6 pm

Saturday, Sunday 10 am—5 pm

CLOSED

New Year's Day, Good Friday, Easter Sunday, Ascension Day, Whit Sunday, August 1, 1st Monday in September: staff excursion, 4th Monday in November: «Zibelemärit», December 24, Christmas Day, December 31

ENTRY FEE

Adults CHF 12.00

Students, senior citizens, people with disabilities CHF 10.00

Groups of 10 or more CHF 10.00

members of the Natural History Museum Society CHF 4.00

Children and youths (up to 16) free

Schools free

DIRECTIONS

Take tram line 7 (Ostring) or 8 (Saali) from Bern railway station or 6 (Worb) to Helvetiaplatz

By car from the A1/A6 motorway: Ostring exit via Thunplatz



Naturhistorisches Museum Bern
Bernastrasse 15, CH—3005 Bern
+41 (0)31 350 71 11
contact@nmbe.ch
www.nmbe.ch

You can find us on social media at:

Facebook, Instagram, Twitter, YouTube @nmbern



INSPIRING PROGRAMME — ALSO DIGITAL

The NMBE opens the door to a profound and inspiring understanding of nature. The aim is to arouse curiosity and interest in a playful way, show the importance of biodiversity and habitat conservation so that it can be understood, and highlight what lies ahead in the future. Each month the museum offers behind-the-scenes guided tours. In the Nature Lab and Geo Lab, adults, children, groups and school classes can discover their surroundings on their own. Animal stories inspire the youngest of all for nature. In addition, the NMBE organizes unconventional cultural events such as the «Bar of Dead Animals» or science shows. Online videos, podcast episodes and quizzes deepen your knowledge. The newsletter provides up-to-date information on the current program:



RESEARCH AND COLLECTIONS AT THE NMBE

With 450,000 fossils, 28,000 birds and one million butterflies — the collections of animals and geoscientific objects are organized, preserved, and researched for the gain of scientific knowledge. For this purpose, the NMBE collaborates with institutions and researchers from all around the world. The museum regularly publishes new research findings. Scientific consultation is offered, along with an in-house library. The insect collection is also available online: www.nmbe.ch/en/research-and-collections.



PLAYING YOUR PART

There are a number of ways to get involved with the NMBE, for example as a volunteer, a sponsor or as a member of our association.

YOUR EVENT

A business event, birthday party or family tour in the museum? The NMBE offers a breathtaking backdrop, imaginative culinary delights and expert guides for private occasions. For an unforgettable experience: www.nmbe.ch/en/our-offer/your-event.



A MUSEUM FOR ALL

The museum has a barrier-free and user-friendly infrastructure. Parking spaces for prams, changing facilities, gender-neutral toilets, wheelchair-accessible rooms, free Wi-Fi and picnic corners are available. The museum café offers fresh snacks from regional and sustainable production. Exhibition content is available in German, French and English. Photography is allowed throughout the museum. And in the shop, everyone can find the souvenir they're looking for!

